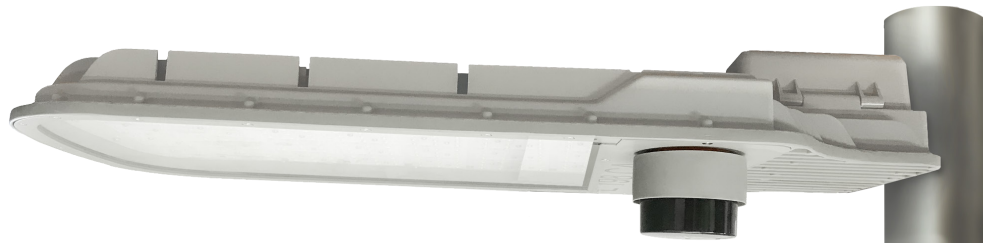
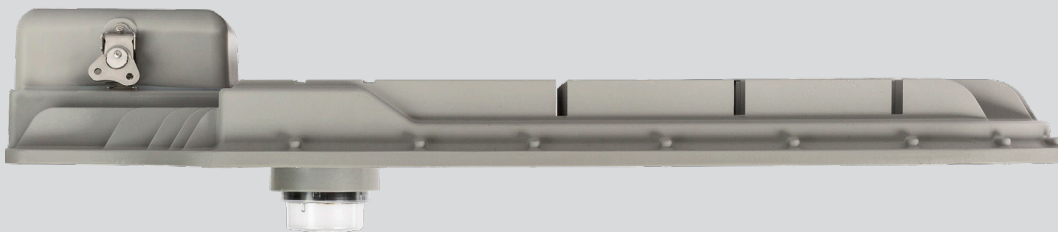


# ALDRIDGE



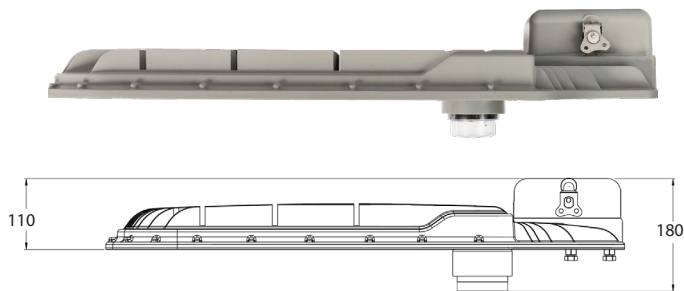
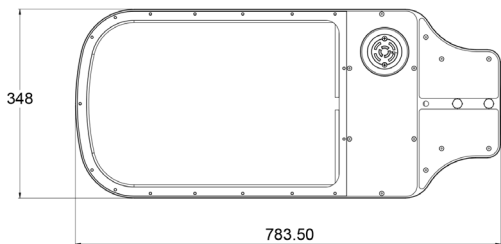
## V-LED MKII - 147W FT



### LED Lighting for Major Roads and Tunnels



### Dimensions



### Features

- Smart City Ready - TST compatibility Zigbee, LoRa, NBIoT
- High Performance roadway luminaire designed to meet stringent Australian/New Zealand road lighting standard, AS/NZS 60698.2.3 & AS/NZS TS 1158.6
- High Performance Optics designed to comply and meet Australian standards AS1158-1.1 Cat V
- Direct replacement of conventional V - Category High Pressure Sodium and Metal Halide luminaires
- Semi-cutoff and Aero screen (std) diffuser Integrated
- thermal management
- Supports DALI-2 connection with D4i extension
- Segregated termination chamber c/w quick access
- 20 year Design Life
- 10 year warranty

### Options

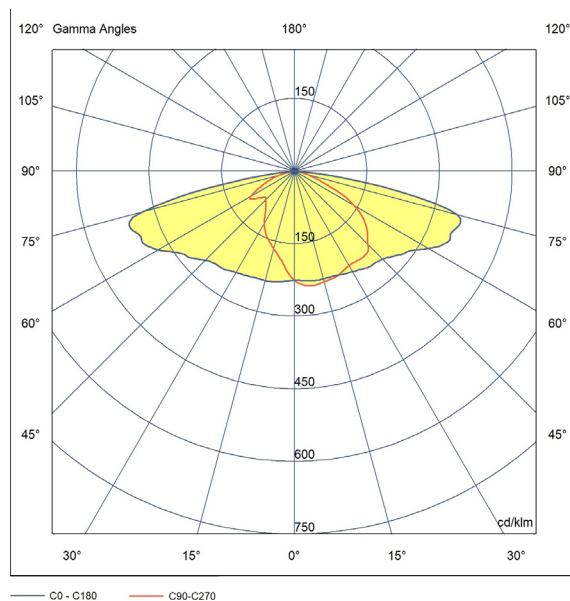
- Photocell: 7-pin Nema receptacle (7PN)
- Zhaga (Optional)
- 3 in 1 Dimming w/o DALI-2 (Optional)
- Fuse Terminal Block: (FTB)
- Surge Protection Device: (SPD - 10KVA, 20KVA)
- Class II: (DB - Double Insulated)
- Colour: Black (BL), White (WH) Grey (GR - Standard)
- CCT: 3000K, 4000K (Standard), 5000K
- Visor: Glare shield/spill light kit (GV)
- Remote Gear: (GV)
- 5° Tilt Adjustment Adapter: (5TA)



### Technical Data

- Body:** High Pressure Marine Grade Die Cast Aluminum
- Optics:** Type 2 - 3
- LED:** CREE
- Wattage:** 147 Watts
- Finishing:** Powder Coat (Grey Standard)
- Mounting:** 9 - 15 Metres
- Fixing:** Side Spigot Mount (43 - 49mm OD)
- IP rating:** IP65
- IK rating:** IK06
- Voltage:** 220V - 240V 50/60Hz
- Power Factor:** >0.9

### Photometric Design Data



### Specification V-LED MKII - 147W FT

PRODUCT CODE	V147WT5FTN7PBP/V147WT5FTN7PBP-TMR
System Watts	147
Input Voltage (V)	220V - 240V 50/60Hz
CCT (K)	4000
CRI	Ra>70
IP Protection	IP65
IK Protection	IK06
Weight (Kg) Remote Gear: Less 1.8Kg	<14kg