



**Australian  
Designed  
for Performance**

## ROADLED MIDI

### CATEGORY V LED LUMINAIRE

The RoadLED Midi is a state-of-the-art road lighting luminaire that has been specifically designed in Australia for Australian/New Zealand major road lighting applications.

The luminaire has been specifically engineered to comply with Australian Standards (Category V) allowing it to replace traditional high wattage HID luminaires that are used to illuminate major vehicular roads throughout ANZ. Complies with AS/NZS1158.

The standard powdercoat colour finish is RAL 9006. The control gear is integral 240V with long life ensured from the finned array at the rear of the unit which allows for excellent heat dissipation thus extending componentry life.

### PERFORMANCE SUMMARY

- High performance Roadway luminaire
- Designed specifically to meet Australian/New Zealand road lighting standards, complying with AS/NZS CISPR15, SA/SNZ TS 1158.6 and AS/NZS 60598.1
- The optics and LED light source are optimised to provide maximum spacings for compliance with AS1158-1.1 Category V
- IP66 ingress protection (optical chamber)
- CRI > 70
- Colour Temp: 4000K (Standard)
- Design life of 20 years
- Side entry mount
- Limited warranty: 5 years\*
- Surge protection device (SPD) standard
- Aeroscreen (CO)
- Smart City Ready

\* See Gerard Lighting standard terms & conditions



Where innovation comes to light



## ROADLED MIDI (cont.)

### SPECIFICATIONS

#### Electrical Characteristics:

- Input Voltage: 240V – 50Hz
- Power Factor: 0.9
- System watts: 60W-150W
- Class I
- Surge Protection Device (SPD) standard

#### Optical Characteristics:

- CCT: Available in 4000K
- CRI: > 70
- Lumen Maintenance: L90 @ 88000 hours
- One for one replacement for traditional HID source luminaires (depending on wattage)
- 20 years design life

#### Mechanical Characteristics:

- Pressure die cast aluminium body
- Weight: 8.7-9.2kg
- Acrylic Aero screen (CO) as standard
- Stainless steel fasteners, latches and clips
- Easy to replace visor
- 43mm to 48mm Spigot entry
- Hinged access cover with quick release clips
- RAL 9006 finish as standard
- IP66
- IK06

#### Control Characteristics:

- 1-10V Control
- NEMA 7
- Smart City ready

#### Environmental & Standards:

- Ambient Operation Temps: -10 to 40°C
- EMC compliant: AS/NZS CISPR15, AS/NZS 60598.1 & AS/NZS TS 1158.6: Luminaires - Performance

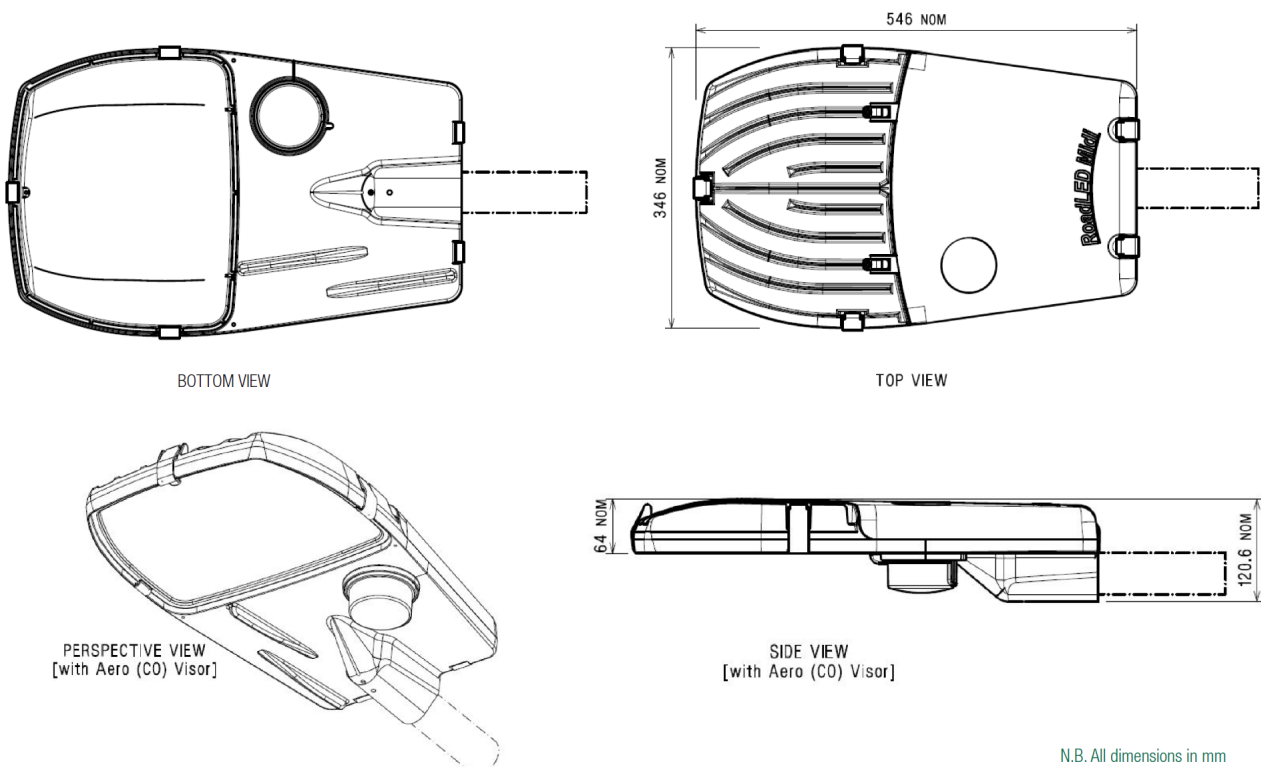
#### Options: (MOQ and additional leadtime applies)

- Push in terminal block
- Fused terminal block
- Class II version
- CCT 3000K optional
- Tamper proof Cockatoo Clip covers available as an accessory
- Light-spill louvre
- DALI

#### SMART CITY SOLUTIONS

- LOWPAN6, ZIGBEE, LORAWAN, NBIOT technologies
- Devices & sensors for smart city applications
- Customised platform integration

### LINE DRAWINGS



N.B. All dimensions in mm



## ROADLED MIDI (cont.)

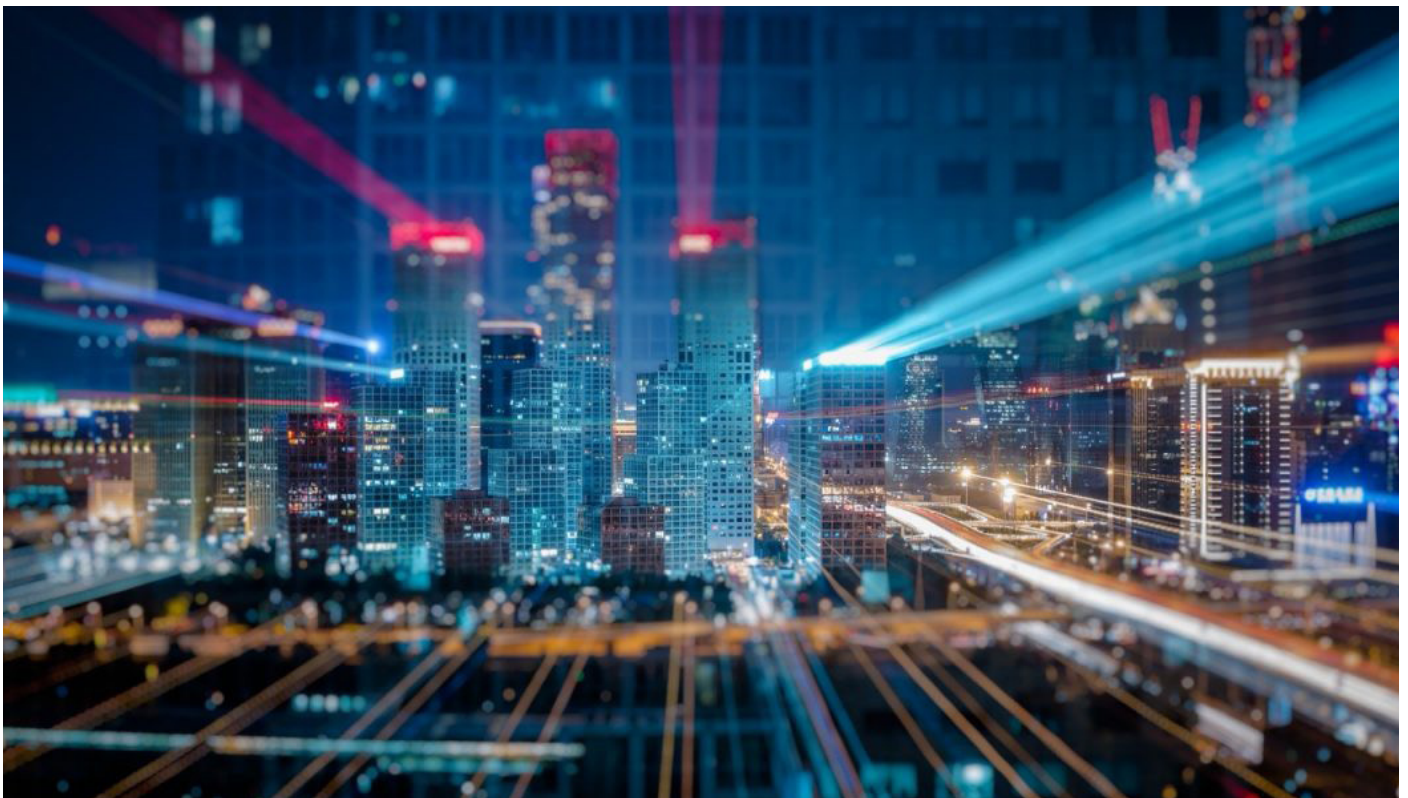
### PHOTOMETRICS

Please contact your Roadway & Infrastructure Lighting representative for photometric information specific to your project.

### ORDER CODES

Name	Dimensions (mm) W x H x D	Mass (kg)	Beam Distribution	System Power (W)	Colour Temperature	Electrical Rating	Installation Type	Dimming Technology	PE Cell Base Type	PE Cell Type (if incl.)
ROADLED MIDI 60W	346 x 121 x 546	8.70	Type 2/3M	60	4000	Class I	Side Entry	1-10Vdc	NEMA 7 pin	Shorting Cap
ROADLED MIDI 80W	346 x 121 x 546	8.70	Type 2/3M	80	4000	Class I	Side Entry	1-10Vdc	NEMA 7 pin	Shorting Cap
ROADLED MIDI 100W	346 x 121 x 546	9.20	Type 2/3M	100	4000	Class I	Side Entry	1-10Vdc	NEMA 7 pin	Shorting Cap
ROADLED MIDI 120W	346 x 121 x 546	9.20	Type 2/3M	120	4000	Class I	Side Entry	1-10Vdc	NEMA 7 pin	Shorting Cap
ROADLED MIDI 140W	346 x 121 x 546	9.20	Type 2/3M	140	4000	Class I	Side Entry	1-10Vdc	NEMA 7 pin	Shorting Cap
ROADLED MIDI 150W	346 x 121 x 546	9.20	Type 2/3M	155	4000	Class I	Side Entry	1-10Vdc	NEMA 7 pin	Shorting Cap

The above codes are for standard offering only. For additional options or product configurations, please consult your Gerard Lighting consultant.



Where innovation comes to light