

# Connecting and Energising a Generating System or Integrated Resource System Prior to Registration Fact Sheet



This fact sheet explains the options for energising a generating system or integrated resource system prior to registration as at June 2024.

This fact sheet is only a summary of the relevant provisions of the National Electricity Law (NEL) and National Electricity Rules (NER) and AEMO's Guide to Registration Exemptions and Production Unit Classification (Guide), which prevail in the case of any inconsistency. Applicants are responsible for ensuring they read and understand those documents and should obtain advice on their specific circumstances. You should also consult your Network Service Provider (NSP) and AEMO regarding individual proposals.

AEMO may also adapt its approach as new technology and configurations emerge, and as market rules and technology regulations change.

If you are seeking to connect and energise a generating system or integrated resource system prior to registration, or you wish to energise a facility's auxiliary systems, you will need to read and understand the NER relevant to registration, connection as a market connection point and operation of a generating system or integrated resource system.

Please also refer to the AEMO's Guide. This fact sheet will not give you all the information you need.

## Frequently asked questions

### When can a generating system or integrated resource system connect to the grid?

Typically, you may only connect and energise your generating system or integrated resource system when your generator or integrated resource provider registration has been approved by AEMO and is effective.

Exceptions to this include:

- If AEMO has approved an application for exemption from registration as a generator or integrated resource provider or you qualify for a standing exemption on the basis it is a small generating system or small integrated resource system. In this case you should speak to the NSP to understand the connection process and any requirements prior to energisation.
- If you have successfully applied to AEMO for a notifiable exemption and the exemption is current.
- If you only intend to connect your auxiliary systems and do not intend to connect and energise your production units.

## Connecting and energising part of a generating system or integrated resource system prior to registration

### What is a notifiable exemption?

A notifiable exemption is a temporary exemption approved by AEMO that allows a generating system or integrated resource system to connect and energise to perform pre-commissioning work in advance of an effective registration. A condition of this exemption is the combined nameplate rating of all production units simultaneously connected at any given time must be <5MW. For example, a wind or solar farm might connect one or two PV inverters or turbines at a time (in aggregate <5 MW) to perform pre-commissioning work.

### When will a generating system or integrated resource system be granted a notifiable exemption?

In general, the applicant will need to be very close to registration to successfully apply for a notifiable exemption as many of the requirements of the full registration will need to be met.

### What are the requirements of a notifiable exemption?

The detailed requirements of a notifiable exemption are set out in the AEMO Guide and the Notifiable Exemptions Application Form.

Requirements include:

- The generating system or integrated resource system has an agreed set of performance standards.

# Connecting and Energising a Generating System or Integrated Resource System Prior to Registration Fact Sheet

- AEMO approved metering installation with a metering coordinator and Market Customer (or Integrated Resource Provider acting as a Market Customer) responsible for the connection point energy settlement.
- The meter NMI must be established in MSATS with the appropriate market roles assigned.
- Approval of the operational arrangements from the NSP responsible for the connection agreement.
- Active SCADA that is capable of continuously monitoring the output of the generating system or integrated resource system so energy at the connection point can be monitored in real time.
- Notification to the NSP and AEMO of switching and changes in status at the connection point.

**Note:** A notifiable exemption does not allow for hold point testing; this can only occur during commissioning when the registration is effective and in accordance with an agreed commissioning plan.

## How can I apply for a notifiable exemption?

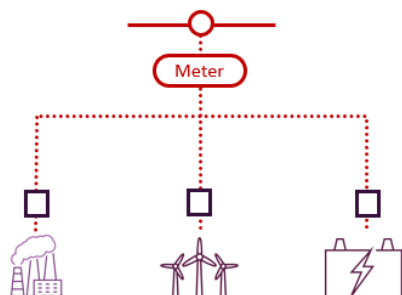
You can apply for a notifiable exemption by submitting the application form found on the AEMO website to [onboarding@aemo.com.au](mailto:onboarding@aemo.com.au).

## Connecting and energising your auxiliary systems prior to registration

### What are auxiliary systems?

Auxiliary systems can be considered those parts of the generating system or integrated resource system that may take load but are not capable of generating electricity. Examples include – bus bar, transformer, lighting, sump pumps.

Market Generator / Integrated Resource Provider / Market Customer



### What conditions apply if I only want to connect auxiliary systems?

If you only want to connect and energise your auxiliary system, you will require the following:

- AEMO approved metering with a metering coordinator and a Market Customer (or Integrated Resource Provider acting as a Market Customer) responsible for the connection point energy settlement.
- The meter NMI must be established in MSATS with the appropriate market roles assigned.
- A process reviewed by AEMO must be in place to ensure that the generating plant is not connected at any time.

**Note:** Connection point metering is generation metering, even though prior to registration it will be used for settlement of a consumption. You must have the metering approved by AEMO prior to any connection to the grid at the connection point.

### What should I do before I connect and energise my auxiliary systems?

You should send a completed Notification form – NEM Energise Auxiliary Load and required supporting information to the AEMO registration team at [onboarding@aemo.com.au](mailto:onboarding@aemo.com.au) who will work with you to confirm that the requirements outlined above are in place. Once confirmed, you may connect your auxiliary systems.



Applicants are advised to contact AEMO early in the design phase of their project to confirm the latest registration and technical requirements.

### Where can I find more information?

For any further enquiries, please contact AEMO's Information and Support Hub via

- [supporthub@aemo.com.au](mailto:supporthub@aemo.com.au) or
- call 1300 236 600