

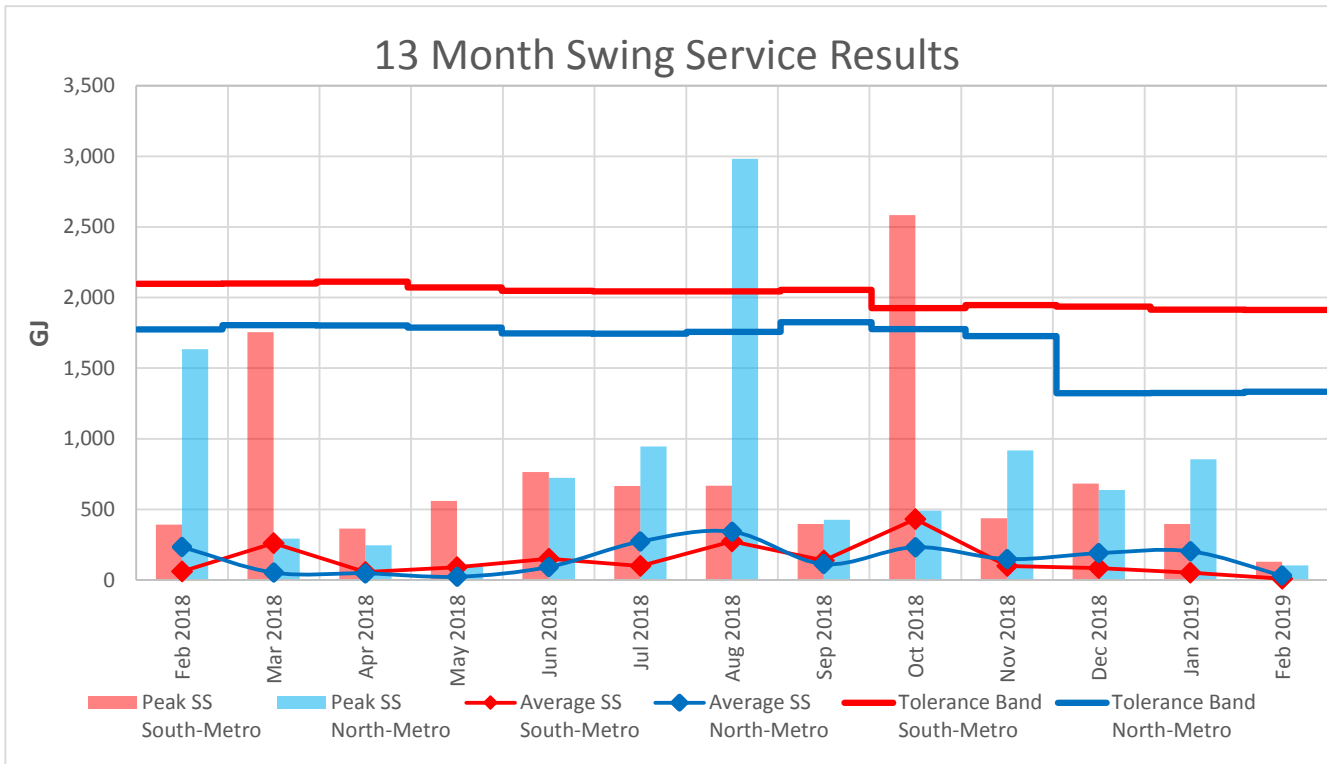
The following table provides the information on the operation of the Swing Service market on the North Metro and South Metro sub-networks over a 13 month rolling window.

Month	Metro-South Sub-Network		Metro-North Sub-Network	
	Peak SS South-Metro	Average SS South-Metro	Peak SS North-Metro	Average SS North-Metro
February 2018	393	61	1,633	234
March 2018	1,755	261	293	52
April 2018	363	56	245	47
May 2018	559	91	94	23
June 2018	764	150	724	92
July 2018	666	99	946	272
August 2018	667	273	2,981	342
September 2018	397	137	427	112
October 2018	2,584	431	490	232
November 2018	437	99	917	148
December 2018	682	83	637	190
January 2019	396	52	855	203
February 2019	130	9	103	30
Average	2-year	166	2-year	208

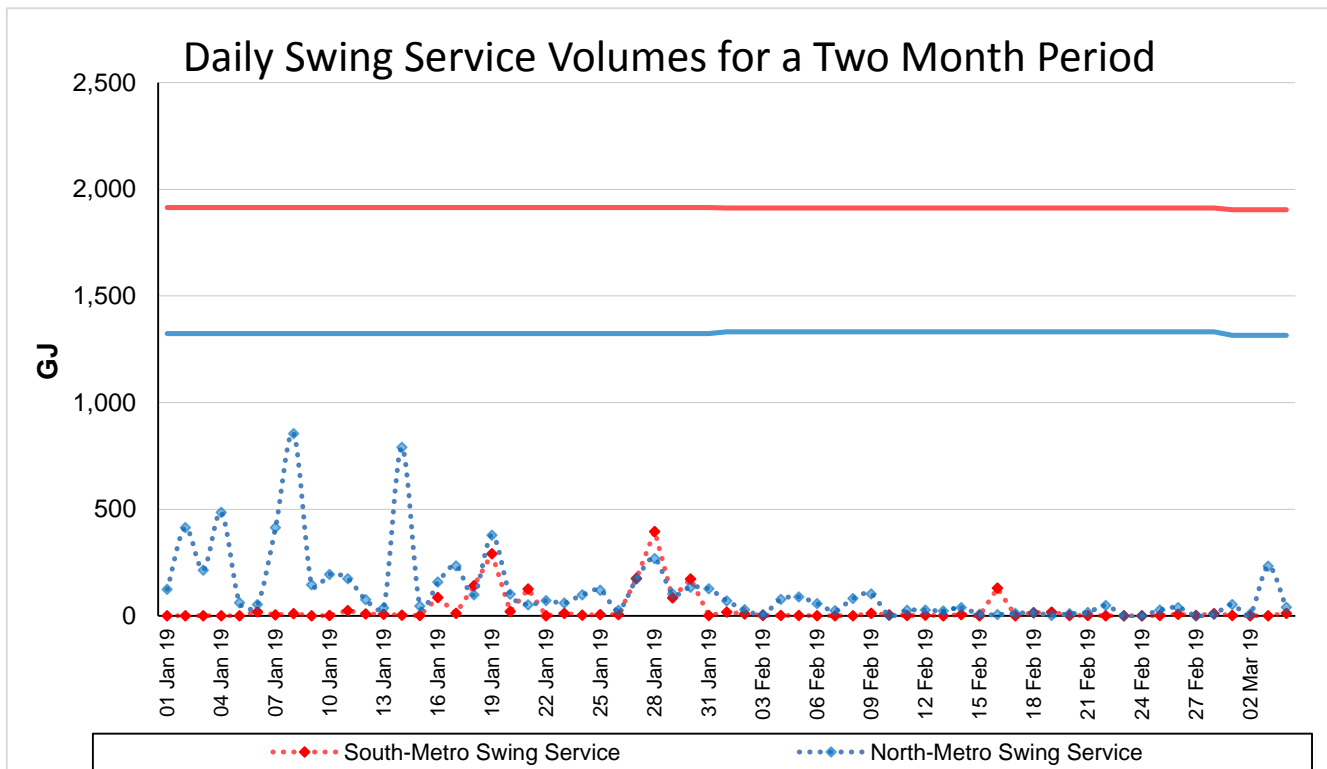
North Metro Average and peak Swing Service volumes in the North Metro sub-network were at relatively low levels for the month of February 2019.

South Metro Average and peak Swing Service volumes in the South Metro sub-network were at relatively low levels for the month of February 2019.

13 Month Swing Service Results



Daily Swing Service Volumes for a Two Month Period



Terms:

- Peak SS means the maximum amount of Swing Service recorded on a day during that month.
- Average SS means the average amount of Swing Service for any day in that month.
- Peak Trend is the linear trend of the Peak SS data, using the least squares method.
- Average Trend is the linear trend of the Average SS data, using the least squares method.
- Tolerance Band is a marker – AEMO will investigate and report on any Swing Service spikes that are larger than the Tolerance Band. The Tolerance Band is defined as a volume equal to the mean amount of Swing Service over the last 2 years plus 3 standard deviations.