

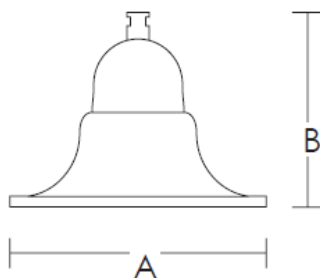


Description

This elegantly designed fixture with its seamless shape offers simplicity and functionality. With its IP55 classification the Greendale allows for indoor or outdoor use keeping insect and moisture out. Housing made from Marine Grade Aluminium and Silicon Gel LED diffuser makes it a great choice for coastal locations.

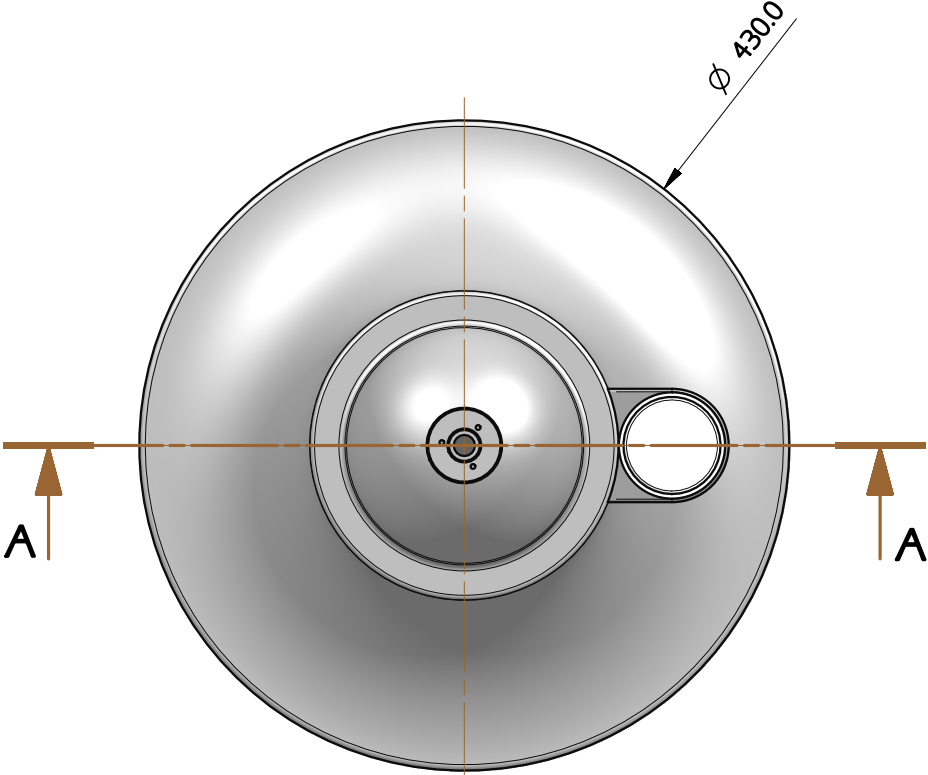
Specification

Code	LS1200-020-16LED
Category	Post Top
Mounting	Spigot - Top Entry
IP	55
Light Source	LED
Input Voltage	240V - 50/60 Hz
Current	500mA
Driver	DALI Dimmable - Tridonic
System Power	18.6W
Luminous Flux	2652 lm
Colour Temperature	4000K
Optics	Asymmetrical
CCT	85
Diffuser	Silicon Gel Optic
Finish	Standard Powdercoat
5 or 7pin NEMA	Optional (Shorting Cap)
Mains Surge Capability (Between L – N)	6kV/3kA
Mains Surge Capability (Between L/N – PE)	6kV
Mains Surge Capability up to (Between L/N-PE)	10kV
Without DALI connection	
Burst Protection	6kV

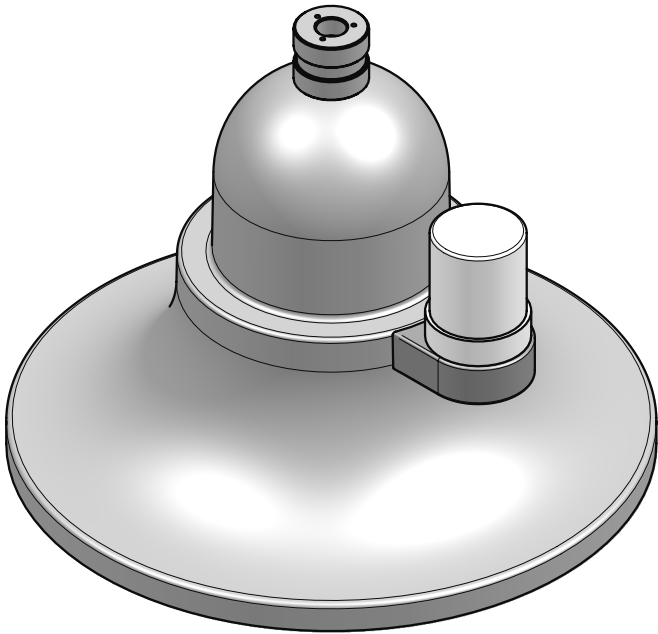


Dimensions (mm)

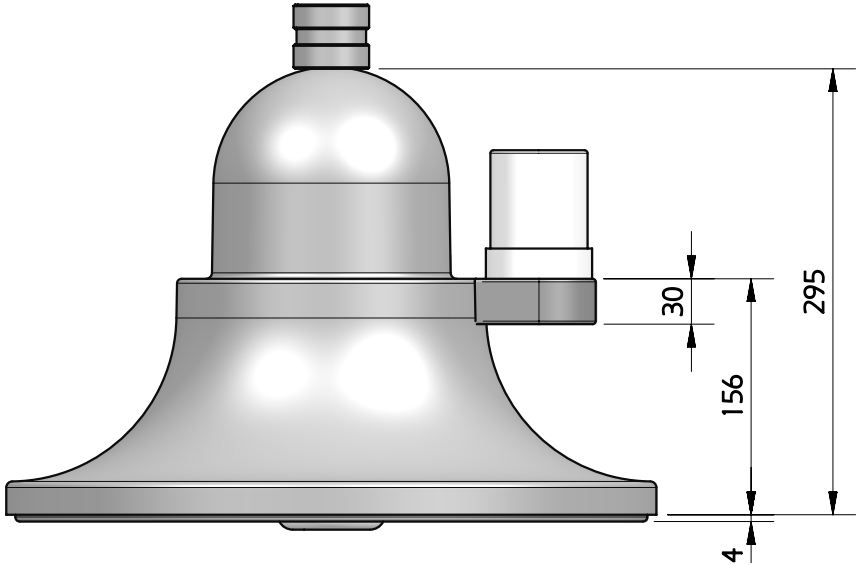
- Diameter	430 (A)
- Height	345 (B)



ELEVATION
SCALE 1:5



PICTORIAL VIEW

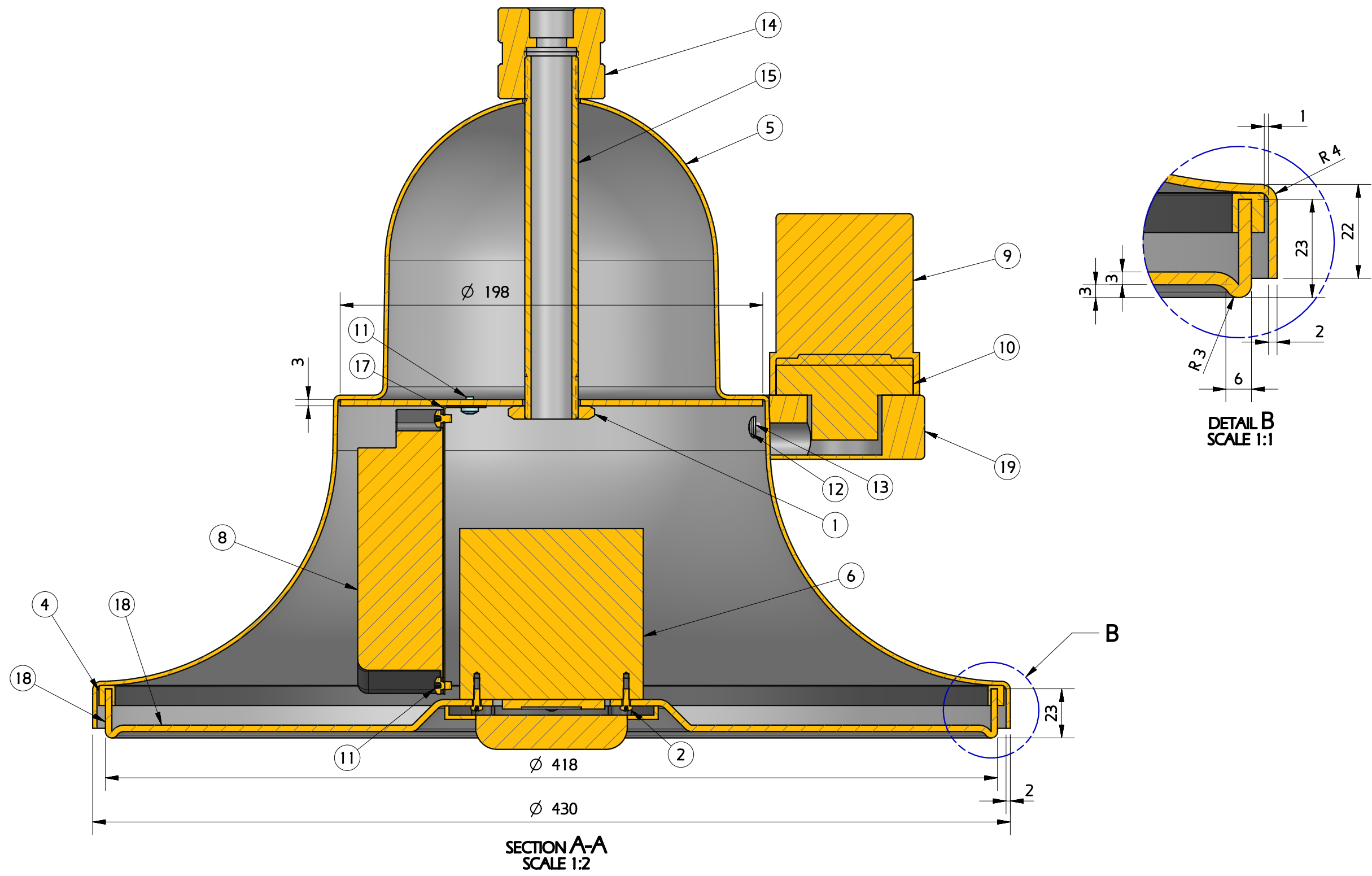


ELEVATION
SCALE 1:5

GENERAL NOTES:

1. REMOVE ALL SHARP EDGES.
2. SURFACE TREATMENT TO BE IN ACCORDANCE WITH PROJECT SPECIFICATIONS.
3. ALL MACHINED SURFACES TO BE 3.2µm U.O.N.

19	NEMA_430_MOUNTING_BLOCK	1	NEMA DIMMER 430 MOUNTING BLOCK	NATURAL
18	LED_MOUNTING_PLATE	1	INNER MOUNTING PLATE	POWDER COAT
17	LED_DRIVER_MOUNT	1	LED DRIVER MOUNT	NATURAL
16	INNER_MOUNTING_PLATE	1	INNER MOUNTING PLATE	ZINC PLATED
15	CONNECTION_TUBE_430	1	CONNECTION TUBE 430	NATURAL
14	CONNECTION_BUSH	1	CONNECTION BUSH	NATURAL
13	-	2	WASHER M5	-
12	-	2	SCREW PAN HD 6G x20	ZINC SILVER
11	-	4	PK SCREW - 5mm	ZINC - SILVER
10	-	1	NEMA FITTING	-
9	-	1	NEMA DIMMER	-
8	-	1	LED DRIVER - TRIDONIC LCA 30W	-
7	-	1	LED COVER	-
6	-	1	HEAT SINK	-
5	-	1	GREENDALE 430 LIGHT SHADE	-
4	-	1	GASKET	-
3	-	2	WOOD SCREW, CSK 6G X 20	ZINC SILVER
2	-	8	SCREW PAN HD M3 x 8	-
1	-	1	HEX NUT 1"	-
ITEM	DRG REF	QTY	DESCRIPTION	FINISH



REV	DATE	BY	DESCRIPTION
0	21MAY18	MH	ISSUED FOR FABRICATION