

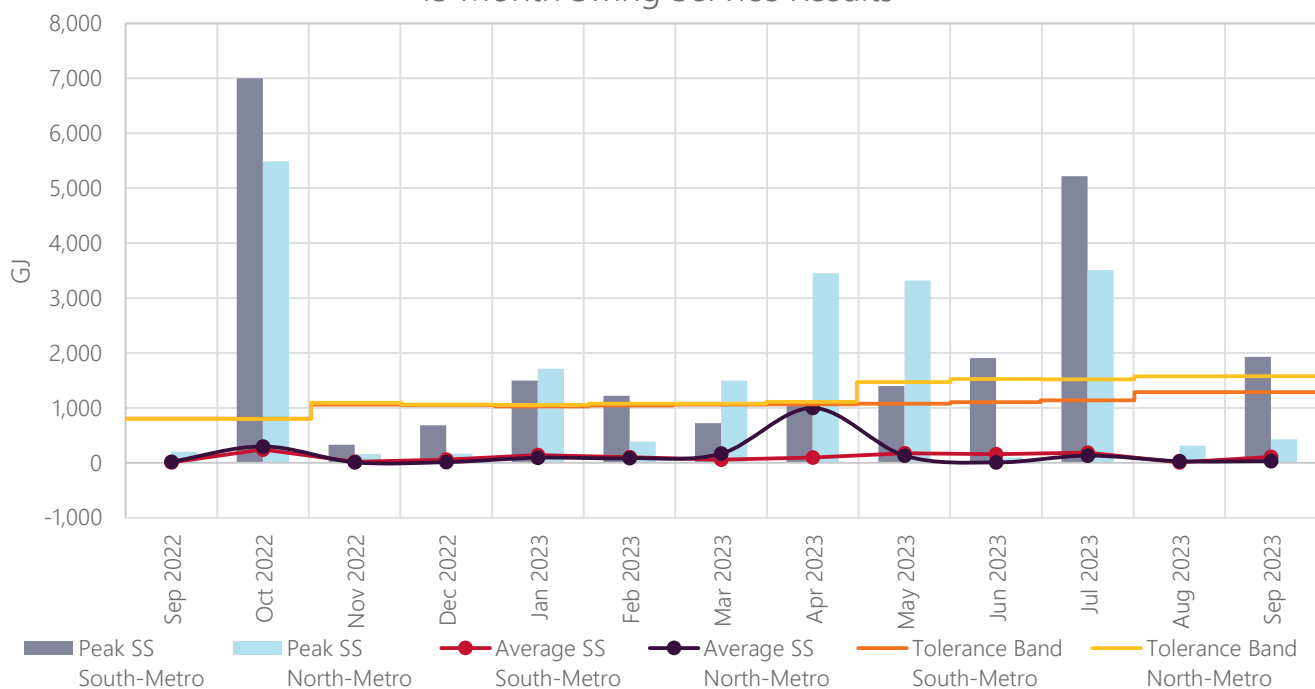
The following table provides the information on the operation of the Swing Service market on the North Metro and South Metro sub-networks over a 13 month rolling window.

Month	Metro-South Sub-Network		Metro-North Sub-Network	
	Peak SS South-Metro	Average SS South-Metro	Peak SS North-Metro	Average SS North-Metro
September 2022	11	9	200	20
October 2022	7,001	242	5,490	298
November 2022	329	17	160	9
December 2022	683	59	169	12
January 2023	1,495	143	1,712	92
February 2023	1,220	100	386	82
March 2023	724	58	1,497	167
April 2023	1,039	97	3,452	997
May 2023	1,396	174	3,319	131
June 2023	1,908	159	93	6
July 2023	5,220	183	3,507	130
August 2023	16	9	314	29
September 2023	1,930	105	429	29
<b>Average</b>	<b>2-year</b>	<b>116</b>	<b>2-year</b>	<b>74</b>

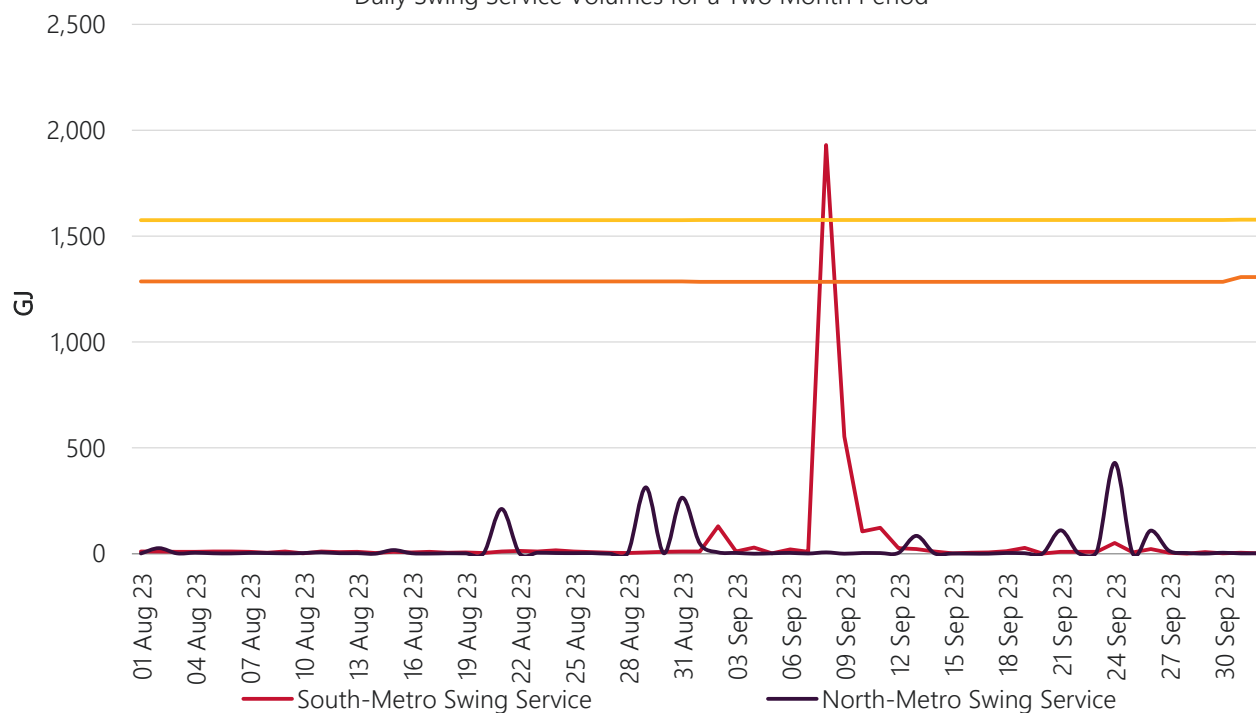
**North Metro** Average and peak swing service volumes in the North Metro sub-network were at relatively low levels for the month of September 2023.

**South Metro** Average and peak swing service volumes in the South Metro sub-network were at relatively low levels for the month of September 2023 with the exception of a spike on gas day 8 September 2023 due to pipeline injection being less than total user pipeline nominated amount (UPNA). The shortfall was due to pigging activity on the ATCO network.

### 13 Month Swing Service Results



### Daily Swing Service Volumes for a Two Month Period



Terms:

- Peak SS means the maximum amount of Swing Service recorded on a day during that month.
- Average SS means the average amount of Swing Service for any day in that month.
- Peak Trend is the linear trend of the Peak SS data, using the least squares method.
- Average Trend is the linear trend of the Average SS data, using the least squares method.
- Tolerance Band is a marker – AEMO will investigate and report on any Swing Service spikes that are larger than the Tolerance Band. The Tolerance Band is defined as a volume equal to the mean amount of Swing Service over the last 2 years plus 3 standard deviations.