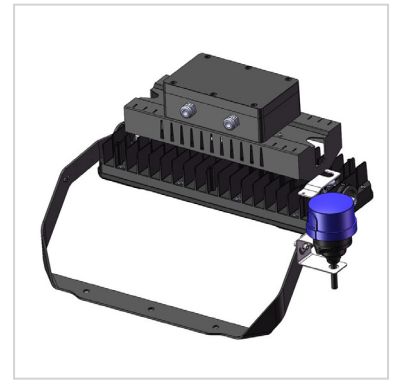


## SYLFLOOD LED



**SYLVANIA**

### NEW GENERATION OF HIGH POWERED LED FLOODLIGHTS

The Sylvania Schröder SYLFLOOD LED floodlight delivers effective and versatile illumination in areas where energy efficiency is a must.

This floodlight offers superior visual comfort, excellent colour perception and visibility to create safe and productive working environments.

The SYLFLOOD LED is designed to minimise unwanted light spill and glare control.

IP 66

IK 08



SPORTS



CAR PARKS



LARGE  
AREAS



INDUSTRIAL  
AREA  
LIGHTING



TRANSIT  
HUBS



SQUARES &  
PEDESTRIAN  
AREAS



**GENERAL INFORMATION**

Recommended installation height	5m -10.5m
Driver included	YES
RCM Mark	Yes
ROHS compliant	Yes
Testing standard	AS/NZS 60598.1:2017

**HOUSING AND FINISH**

Housing	Die-cast aluminium body
Optic	PMMA
Protector	Glass
Housing finish	Polyester texture finish
Standard colour(s)	RAL9006 Any other RAL colour on request
Tightness level	IP66
Impact resistance	IK08

**PERFORMANCE**

Lumen efficacy	130lm/w
----------------	---------

**DIMENSIONS AND MOUNTING**

L x W x H (mm)	588 x 177 x 363
----------------	-----------------

**ELECTRICAL INFORMATION**

Electrical class	Class 1
Nominal voltage	240V
Power factor (at full load)	> 0.9
Surge protection (kV)	20kV
Electromagnetic compatibility (EMC)	AS/NZSCISPR15
Control protocol(s)	0-10V or DALI
Sensor(s)	Devices & sensors for smart city applications

**OPTICAL INFORMATION**

LED colour temperature	4000k
Colour rendering index (CRI)	> 70

**OPERATING CONDITIONS**

Temperature range from operation (Ta)	-20°C to + 40°C
---------------------------------------	-----------------



Name	Trunnion Arm
SYLFLOOD LED 100W 4K ASYMMETRIC	Standard
SYLFLOOD LED 155W 4K ASYMMETRIC	Standard
SYLFLOOD LED 235W 4K ASYMMETRIC	Standard